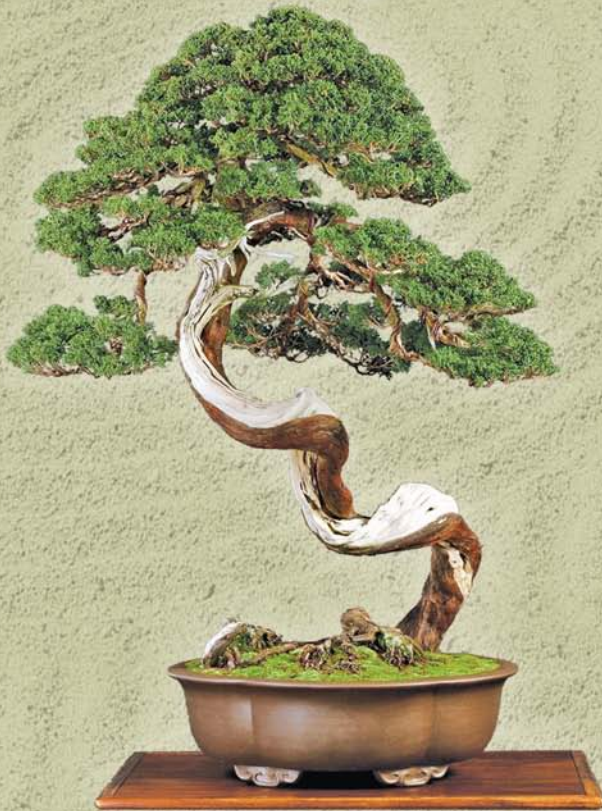


“Be Inspired”



25TH NATIONAL
BONSAI CONVENTION
MELBOURNE 18 - 21 MAY 2012



Bonsai
Northwest
Incorporated



Association
of Australian
Bonsai Clubs Ltd

VENUE: RYDGES HOTEL, BELL CITY

INTERNATIONAL DEMONSTRATOR

Boon Manakitivipart (USA)

Boon's start in bonsai was the result of a birthday gift, a small juniper bonsai. That tree would soon have a huge impact on his life and his future. He became fascinated with bonsai.

He joined the Bonsai Society of San Francisco, where he took his first beginner class in the spring of 1989. Anxious to learn as much as possible about bonsai, Boon studied with as many teachers as he could find in California.

Boon's bonsai skills advanced when he hosted Akio Kondo, who was Kihachiro Kamiya's first apprentice. Mr. Kondo arrived as what the Japanese call a first-year professional, and stayed at Boon's home for one year.

In 1993, the Golden State Bonsai Federation awarded Boon a Teacher Development Scholarship; two years later, he received the Ben Oki International Design Award for styling a Sierra juniper.

In 1995, Boon travelled to Japan where he studied bonsai as an apprentice with Yasuo Mitsuya. Later, Boon worked and studied at Kihachi-En (a famous bonsai nursery in Japan) and was apprentice to Kihachiro Kamiya, a great bonsai master with multiple national awards. Boon said once, "He showed me bonsai standards through his amazing talent and deep personal integrity."

Boon returned repeatedly to Japan for prolonged periods of bonsai study until his master Kamiya's passing in January, 2004.

Boon founded and became the Sensei (primary teacher) of Bay Island Bonsai, and started his business, Bonsai Boon, in 1998.



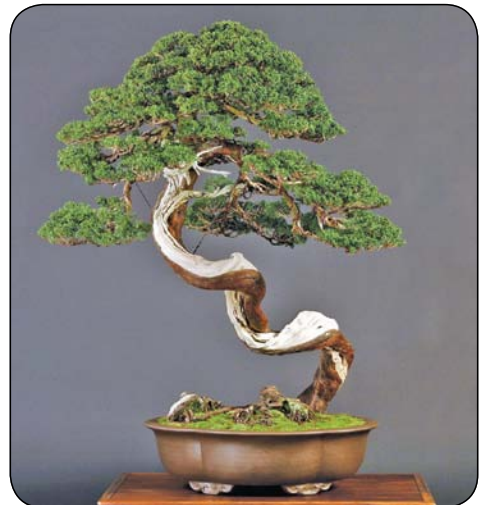
In April 2000, Boon won the Grand Prize in the Kindai Bonsai Styling Contest in Japan (sponsored by Kindai Bonsai Magazine). Contestants styled large Japanese white pines. Boon was the only non-Japanese in the contest.

The World Bonsai Contest recognised Boon's trees in 2000, 2001, and 2002 as among the world's top 100 entries, and his students' trees have been recognised in every contest to date.

Boon's passion is bonsai education, both learning and teaching. His goal is to share his bonsai expertise and knowledge with other bonsai enthusiasts through his teachings.

Boon has won numerous national and international awards for his work on bonsai. He is known for his innovative techniques, unique bonsai styling and creative teaching methods.

Today Boon makes his living as a full-time bonsai artist in Northern California. He styles client trees, lectures, puts on demonstrations, holds workshops, and finds show-quality bonsai for clients.



AUSTRALIAN DEMONSTRATORS

Don DeLuca

Don began his bonsai journey in 1987. He has been fortunate enough to travel both in Australia and overseas to study bonsai and learn techniques from some of the most competent people, such as Lee Wilson,



Lindsay Bebb, Hirotooshi Saito, Grant Bowie and Kevin Willson (UK).

For twenty years Don has successfully run a Bonsai Nursery and for the last ten years he has specialised in field grown stock, giving him thousands of trees to experiment on and perfect his techniques ready to pass onto others.

Don is a tutor on the AABC Register of National Demonstrators. He is very entertaining whilst imparting his knowledge and techniques during his demonstrations.

Glen Bebb

Glen Bebb, along with husband Lindsay, owned and operated Bonsai Nursery (Brisbane), a Nationally Accredited Garden Centre, where she worked full time for over twenty years.

Glen has conducted regular bonsai courses and workshops both at the nursery and as a registered National Demonstrator throughout the country.

She has demonstrated at several National and International Bonsai Conventions.



She has also conducted bonsai and horticultural courses for disabled students and their carers.

Glen has served 20 years on the committee of the Bonsai Society of Queensland, 12 years as President, and 20 Years on the committee of the Association of Australian Bonsai Clubs Ltd. She is currently Executive Director of Bonsai Clubs International and Chair of the International Instructors Register.

She has served on the management team of National Conventions over the past 25 years.

Glen has received several awards for bonsai. She continues to travel extensively both teaching and studying bonsai and conducting bonsai tours.

Host Club: Bonsai Northwest

The Club is entering its fortieth year and over this time has gathered many talented bonsai enthusiasts into its fold.

Some of these talented club members will be on stage as the Bonsai Northwest Talent Team, assisting the demonstrators and also concluding the Convention.



The BNW Talent Team have the skill set, the knowledge base and the right amount of enthusiasm to master any project.

Their skills and enthusiasm will be put to the test as they master the many challenges that will be placed before them on this one afternoon in May.

CONVENTION PROGRAM

Friday Nursery and Garden Tour

A full day guided coach tour, taking in Bonsai Art bonsai nursery, the Paradisia bonsai collection, and the Australian Garden at the Royal Botanic Gardens Cranbourne.

The tour will leave from Bell City and return in plenty of time for you to join the Welcome Reception. Bookings are essential as numbers are limited.



Friday Welcome Reception

An opportunity to meet the demonstrators, catch up with old friends and make new ones.

The Welcome Reception will be held in the Marquee from 7:00 to 9:00 pm, with drinks and light refreshments and a sneak preview of the Bonsai Exhibition.



CONVENTION PROGRAM

Saturday Demonstrations

A full day of inspiration with demonstrations by Boon Manakitivipart and Don DeLuca in the Bell City Ballroom. Morning tea, lunch and afternoon tea will be provided. Access to the Bonsai Exhibition and Specialty Bonsai Sales Area available all day.



Convention Dinner

A fully catered three-course dinner in the Marquee. Enjoy the company of bonsai friends and be entertained by a special guest speaker.



Sunday Demonstrations

A presentation by Glen Bebb, followed by further inspiration from Boon and concluding with a presentation by members of Bonsai Northwest Talent Team. Morning tea, lunch and afternoon tea provided. Access to the Bonsai Exhibition and Sales Area available all day.



Monday Workshops

Boon Manakitivipart will offer two Masterclass workshops (one in the morning and one in the afternoon) for experienced bonsai enthusiasts.

Don DeLuca also will conduct two workshops, for those with some bonsai experience.

There is room for 8 participants plus observers at each workshop.

Attending these workshop sessions will extend your knowledge of bonsai style and technique. Be inspired.



VENUE

Rydges Hotel Bell City

Rydges Hotel Bell City is set amongst beautifully resort style landscaped gardens, conveniently located in Melbourne's inner north just 20 minutes from the CBD and 15 minutes from Melbourne's Tullamarine airport.

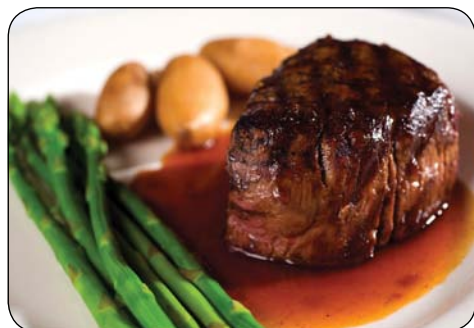
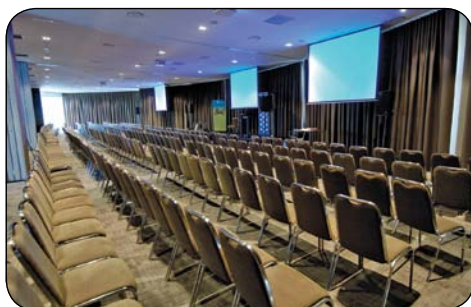
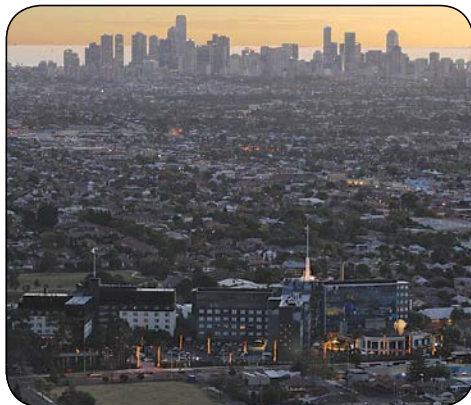
The Convention will be hosted in the Bell City Ballroom with all meals served in the Marquee.

The East wing will house an exhibition of Victoria's premiere Bonsai and a retail area will be in the New York Room.

There is a choice of accommodation: Spacious 1 & 2 bed **Manhattan** studio apartments with the latest in technologies and creature comforts are truly a home away from home. **Sleep & Go** offers the best value hotel room in Melbourne, with all the facilities you would associate with an international hotel.

There is a choice of restaurants on site: Chill Restaurant and Bar, JD's Diner and Bar, Pantry Cafe and Pantry Convenience store.

Other facilities include disabled access, 24 hour reception, room service, pool, gymnasium, guest laundry service, laundromat and internet cafe.



ACCOMMODATION

Manhattan Apartments

The 4.5 star hotel rooms are spacious Manhattan style 1 and 2 bed studio apartments.

1 Bed Manhattan – \$169.00 per night

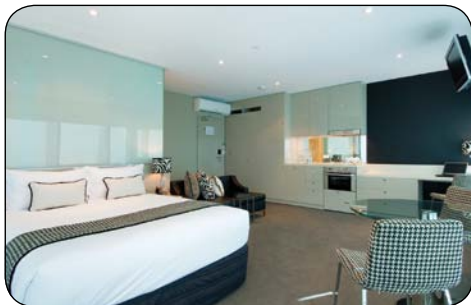
2 Bed Manhattan – \$229.00 per night

Room Features:

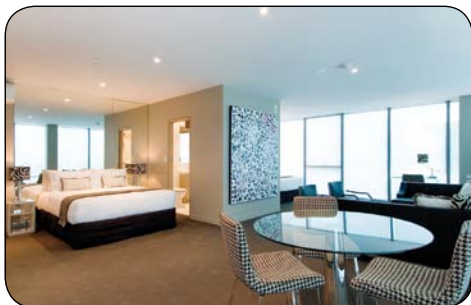
Self contained kitchenette including stove top, microwave, fridge, lounge and dining, work station, high speed internet, foxtel, self controlled reverse cycle air conditioning / heating, LCD TV and in-room safe.

Note: Rates are room only per night. All rates quoted are valid based on the dates and number of room nights and are subject to availability at the time of the booking.

A Full Buffet Breakfast is an additional \$18.00 (normally \$24.50) per person when pre-booked with your reservation.



1 Bed Manhattan



2 Bed Manhattan



Sleep and Go

Comfortable 3.5 star rooms provide you with a quality overnight stay.

Sleep & Go Queen – \$109.00 per night

Room Features:

Tea and coffee making facilities, en suite, self controlled air conditioning, work station, high-speed internet and Foxtel.



Sleep and Go Queen

Bookings

To book your Rydges Bell City accommodation and receive the special convention rates, use the link below to go to the customised Convention page:

www.rydges.com/cwp/bonsaiconvention

HOW TO GET THERE

Tram:

Route 86 Bundoora RMIT

(leaving from Docklands Drive, Melbourne City to Bundoora RMIT, Plenty Road).
Tram stop 45 is at Bell Street.

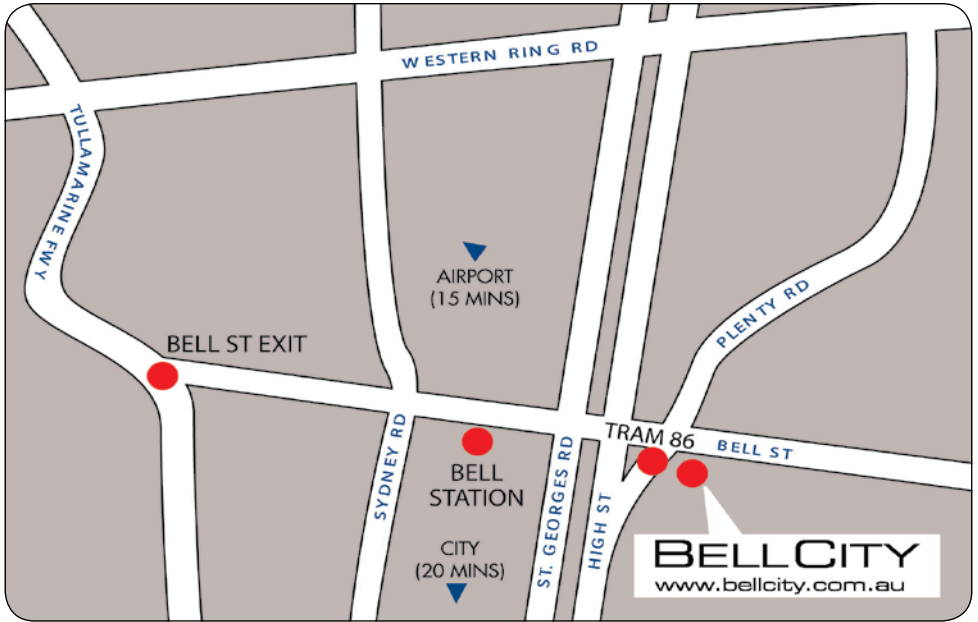
From the city (Docklands Drive, Waterfront City), Route 86 departs approximately every 15 minutes on Saturday and every 30 minutes on Sunday.

Train:

The **Epping Line** takes you to **Bell Train Station**, which is a 10 minute walk to Rydges Bell City.

Trains depart from **Flinders Street Station**, Melbourne City, approximately every 20 minutes on Saturday and every 30 minutes on Sunday. The journey takes approximately 22 minutes.

Car: Complimentary onsite parking.



From the Airport

Airport Eastside Shuttle
03 9729 7622
www.airportbus.com.au

Airport Bus Eastside operates a shuttle bus service to and from Melbourne Airport (Tullamarine) to Melbourne's northern and eastern suburbs. They offer a fixed route service that operates along a predetermined

route on Monday to Friday. The Preston stop is Bell Street outside Rydges Hotel.

To book your seat on the shuttle service phone (03) 9729 7622 or book online at www.airportbus.com.au and save \$5.00.

They also offer a Door to Door service, to book this service use the **Get a Quote** tab on the website.

REGISTRATION FORM

First Name: _____ Surname: _____ Title: _____

Address: _____

State: _____ Postcode: _____ Telephone () _____

Email: _____

Affiliated Club: _____

(Please see over to continue your registration details)

- Please fill out a separate form for each registrant (Photocopies are accepted).
- **Full Registration includes:** All demonstrations on Saturday & Sunday, entry to Exhibition and Sales area, lunch, morning and afternoon tea on both days and Convention kit. Please advise if there are any dietary considerations, no guarantee on the day.
- **Day Registration includes:** All demonstrations on Saturday or Sunday, entry to Exhibition and Sales area, lunch, morning and afternoon tea on chosen day and Convention kit. Please advise of any dietary considerations, no guarantee on the day.
- Each registration incurs a \$20.00 non-refundable administration fee in the event of cancellation.
- Cancellation after 1 May 2012 will also incur catering and tour costs.
- The Convention, including Welcome Reception, Convention Dinner and Monday Workshops, will be held at: **Rydges Bell City, 215 Bell Street, Preston, Victoria, Australia.**
- Accommodation bookings should be directed to the venue of your choice.
- Lunch on the Nursery & Garden Tour (18 May 2012) can be purchased at **Garden World Café** or **Boonerwurrung Café.**
- Lunch on Workshop day (21 May 2012) can be purchased from **Pantry Café, Bell City.**
- Information provided on this form will be used only for purposes of the Convention.
- Dietary considerations (no guarantee on the day):
 - Diabetic Gluten Free Dairy Free Vegetarian Vegan
 - Other (please specify)



BONSAI
NORTHWEST
INC
MELBOURNE



ASSOCIATION
OF AUSTRALIAN
BONSAI CLUBS
LTD

REGISTRATION FORM

REGISTRATION (please tick)		FEE	TOTAL
<input type="checkbox"/>	Early Bird Full Registration (before 1 November 2011)	\$240	
<input type="checkbox"/>	Full Registration (after 1 November 2011)	\$270	
<input type="checkbox"/>	Day Registration (Saturday)	\$155	
<input type="checkbox"/>	Day Registration (Sunday)	\$155	
OPTIONAL ACTIVITIES (please tick) (partners welcome to participate)			
<input type="checkbox"/>	Friday Nursery & Garden Tour	\$50	
<input type="checkbox"/>	Friday Night Welcome Reception	\$60	
<input type="checkbox"/>	Saturday Night Dinner	\$95	
WORKSHOPS (please tick)		Morning	Afternoon
Boon Manaktivipart:	Participant	<input type="checkbox"/> \$70	<input type="checkbox"/> \$70
Don DeLuca:	Participant	<input type="checkbox"/> \$50	<input type="checkbox"/> \$50
Workshop:	Observer	<input type="checkbox"/> \$30	<input type="checkbox"/> \$30
TOTAL		\$	

REGISTRATIONS CLOSE ON 1 MAY 2012

Method of Payment (please tick):

Cheque Money Order – payable to: **Bonsai Northwest 2012 Convention**
 Direct Deposit: **Bonsai Northwest 2012 Convention**
BSB: 063 627 Account No: 1032 4446

(Please use your Surname and Initials as reference so we can match your deposit)

Please mail this registration form (including cheque or money order, plus a stamped self addressed envelope) to:

AABC 2012 Convention, PO Box 222, Yarraville VIC 3013

Receipt and confirmation letter will either be sent via return mail or e-mail where available.

Contact **Glenys: 0407 523 741** or **David: 0418 127 262**

Visit: **www.bonsainorthwest.com.au** for all Convention information.



“Be Inspired”



Registration Details:

Please fill out a separate form for each registrant (Photocopies are accepted).

Full Registration includes:

All demonstrations on Saturday & Sunday, entry to Exhibition and Sales area, lunch, morning and afternoon tea on both days and Convention pack. Please advise if there are any dietary considerations, no guarantee on the day.

Day Registration includes:

All demonstrations on Saturday or Sunday, entry to Exhibition and Sales area, lunch, morning and afternoon tea on chosen day and Convention pack. Please advise if there are any dietary considerations, no guarantee on the day.

Each registration incurs a \$20.00 non-refundable administration fee in the event of cancellation. Cancellation after 1 May 2012 will also incur catering and tour costs.

The Convention:

The Convention, including Welcome Reception, Convention Dinner and Workshops, will be held at:

Rydges Bell City, 215 Bell Street, Preston, Victoria, Australia.

Accommodation bookings should be directed to **Rydges Hotel, Bell City.**

Lunch: Lunch on the Nursery & Garden Tour (18 May 2012) can be purchased at **Garden World Café** or **Boonerwurrung Café.**

Lunch on Workshop Day (21 May 2012) can be purchased from **Pantry Café, Bell City.**

Further Information:

For all convention information and forms visit: **www.bonsainorthwest.com.au**



Host Accommodation & Conference Centre: Rydges Hotel, Bell City

To book your Rydges Bell City accommodation and receive the special convention rates go to the customised Convention page: www.rydges.com/cwp/bonsaiconvention

Host Club: Bonsai Northwest

BNW is a non profit interest group in Melbourne, Australia, geared towards helping beginners and experienced alike, in the art of Bonsai. It was established in 1973.

We offer members monthly demonstrations and workshops, an informative monthly newsletter, a comprehensive library, reduced prices on pots, tools, wire and the chance to join a friendly, relaxed group of over 100 people who all have an interest in the art of bonsai.

The group meets at 8:00 pm, at the Clifton Park Bowling Club, Essendon, Victoria, on the first Monday of the month (except January).



Bonsai Northwest Inc
A-19332L

PO Box 222, Yaraville, VIC 3013 Australia
www.bonsainorthwest.com.au



Association of Australian Bonsai Clubs Ltd
ACN 115 238 861

PO Box 513, Ascot Vale, VIC 3023 Australia
www.aabcltd.org

The details listed were correct at the time of going to press but are subject to change without notice.
We advise patrons to check with the relevant organisations to confirm they are still current.
Keep updated with the organiser's website: www.bonsainorthwest.com.au