

ILLAWARRA BONSAI SOCIETY INC

Invites you to join us for our 11th

WEEKEND WORKSHOPS

Featuring demonstrations and workshops by

Derek Oakley

(Western Australia)

Clinton and Ray Nesci

(The School of Bonsai)

6.00pm Friday 17 September to

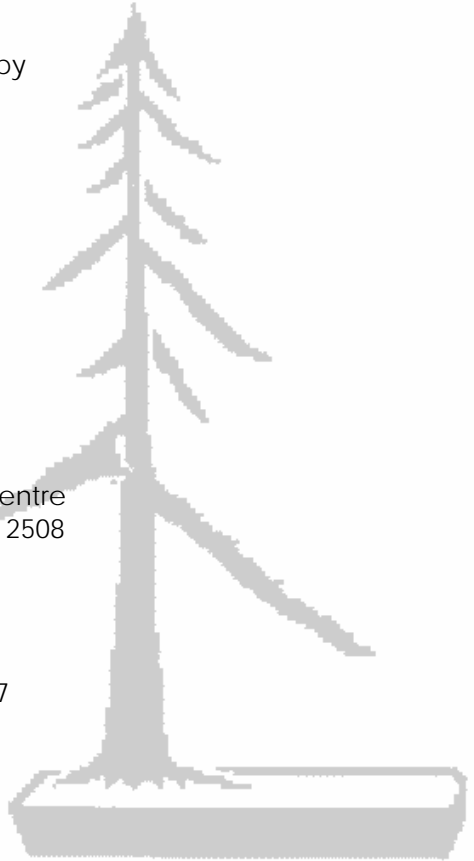
4.00pm Sunday 19 September 2010

Banksia Complex, The Tops Conference Centre
off Bendena Garden Road, Stanwell Tops 2508

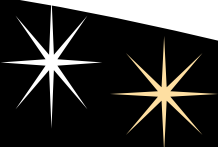
Enquiries:

Brenda 0412 384 834 or Jamie 0415 440 807

Web: www.illawarrabonsaisociety.org



Participating in the tutored workshops is not mandatory to joining in this wonderful weekend of bonsai - you may bring your own trees to work on yourself, or you can bring a woodworking project, or you may choose just to come and enjoy the social aspects of a weekend spent with fellow bonsai lovers in the beautiful bushland surrounds at Stanwell Tops. Partners and families are welcome. Other activities available nearby include bushwalking, swimming, horse riding, hang gliding and paragliding.



Your Invitation

You are invited to join members of Illawarra Bonsai Society at our 11th Weekend Workshop, at The Tops Conference Centre at Stanwell Tops. Our guest demonstrators/tutors are well known and respected bonsai artists, Derek Oakley from WA, and Clinton and Ray Nesci from the School of Bonsai. Derek will conduct workshops and major demonstration on Saturday night. Clinton will conduct workshops, and on Sunday Clinton and Ray will team up for an entertaining demonstration. The Tops Conference Centre, located an hour south of Sydney is set on 200 acres of pristine bushland. The Banksia Complex is modern, with full conference facilities, and spectacular escarpment views. All rooms are ensuite, and have modern bunk beds. Rooms are heated, each bed supplied with a doona and pillow. Sheets or sleeping bags must be provided by guests (linen can be provided by the Conference Centre at an additional charge: please request on your registration form).

Derek Oakley

Derek first became interested in Bonsai in the early 80's after winning a bonsai in a raffle. He was given a copy of *You to Can Grow Bonsai in Australia* by Vita and Dorothy Koreshoff in 1985, realised the tree was being abused, but had survived. He joined the Bonsai Society of Western Australia later serving as a Committee member and then President. He has workshoped with International and Interstate tutors, such as Peter Adams, William Valalvanis, Barrington Chee and the late Ron Andersen. He began teaching and has taught at TAFE colleges around the Perth Metro, and the Murdoch University of Horticulture. Derek is proficient in all styling aspects of Bonsai. He has a particular love for our Native trees with a personal preference being Melaleucas. He has won quite a few awards both for the International photographs and National. He won the best in show inaugural award by the President of BCI in 2001 for Australia, and Perth Royal Show Championship.

Clinton Nesci

Clinton Nesci has worked full time in his family's bonsai nursery since 1989. He holds a Nursery Trade Certificate from the Ryde School of Horticulture, studying bonsai and later becoming a teacher at The School of Bonsai, of which he is the current President. Clinton has demonstrated throughout NSW and in Hamilton, New Zealand. Working has had exposure to different varieties of plants suitable for bonsai, and has expansive knowledge on the growth and development of a wide range of plant material. His favourite material is species of juniper. He enjoys the flexibility in styling options this plant material presents and its hardiness in our sometimes harsh Sydney climate. You will find Clinton open to your ideas for your plant material – he always endeavours that final styling decisions not only suit the plant, but the owner as well.

Ray Nesci

One day in 1968, on his way to a gardening job, Ray first encountered Bonsai. He was on the train reading when he stumbled upon an advertisement for Bonsai seeds. He sent his \$2 off for some "Bonsai Seeds". And so began his lifelong interest in bonsai. Ray is grateful that through Bonsai he has been able to make a very enjoyable hobby into a successful business.

Woodworking

Whilst no formal woodworking workshops will be held this year, there will be table kits available for purchase at a minimum cost (please request on your registration form). However, woodworking assistance will be available on an ad hoc basis for those requiring it.

Registration

Full registration is from 6.00pm Friday to 4.00pm Sunday and includes all meals (except dinner on Friday night – please dine before arrival), morning and afternoon teas, supper and accommodation. Day registration includes morning and afternoon teas and lunch. It does not include dinner on Saturday night, but this is available for an additional \$15. Beds will be allocated on receipt of registration. Please do not arrive before 6.00pm Friday to allow the organisers time to set up.

Vacating the Site

On Sunday morning all bedrooms must be vacated by 10.00am. A storage room will be made available to store your luggage, or else you can place it directly in your car.

Program

Friday 17 September 2010

- 6.00pm Arrival (dinner is not available – please dine before arrival)
- 8.00pm Bonsai From a Box With a Twist, featuring 5 mystery demonstrators, co-ordinated by Andrew Christy
- 9.30pm Supper

Saturday 18 September 2010

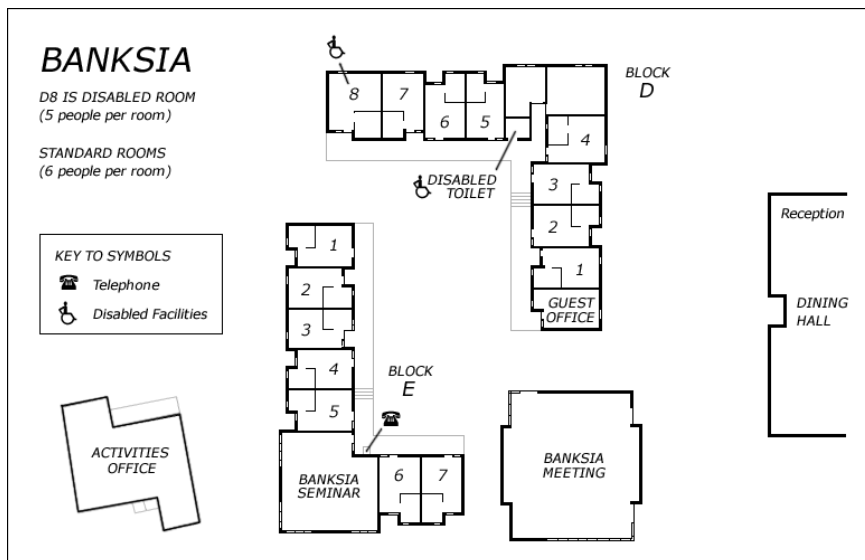
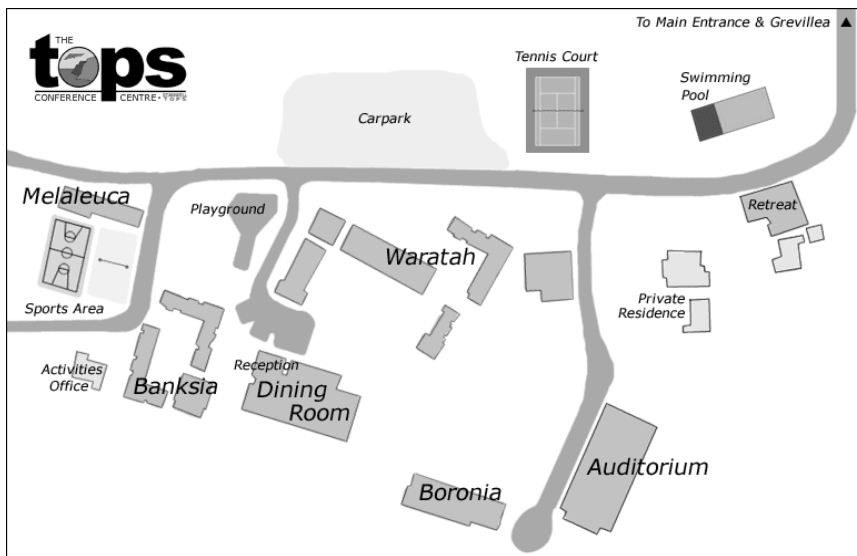
- 7.30am Breakfast
- 8.30am Workshop 1 - Derek Oakley
Workshop 2 - Clinton Nesci
- 12.30pm Lunch
- 1.30pm- Workshop 3 - Clinton Nesci
Workshop 4 - Derek Oakley (if sufficient demand)
- 6.00pm Happy Hour
- 7.00pm Dinner
- 8.00pm Major Demonstration – Derek Oakley
- 10.00pm Supper

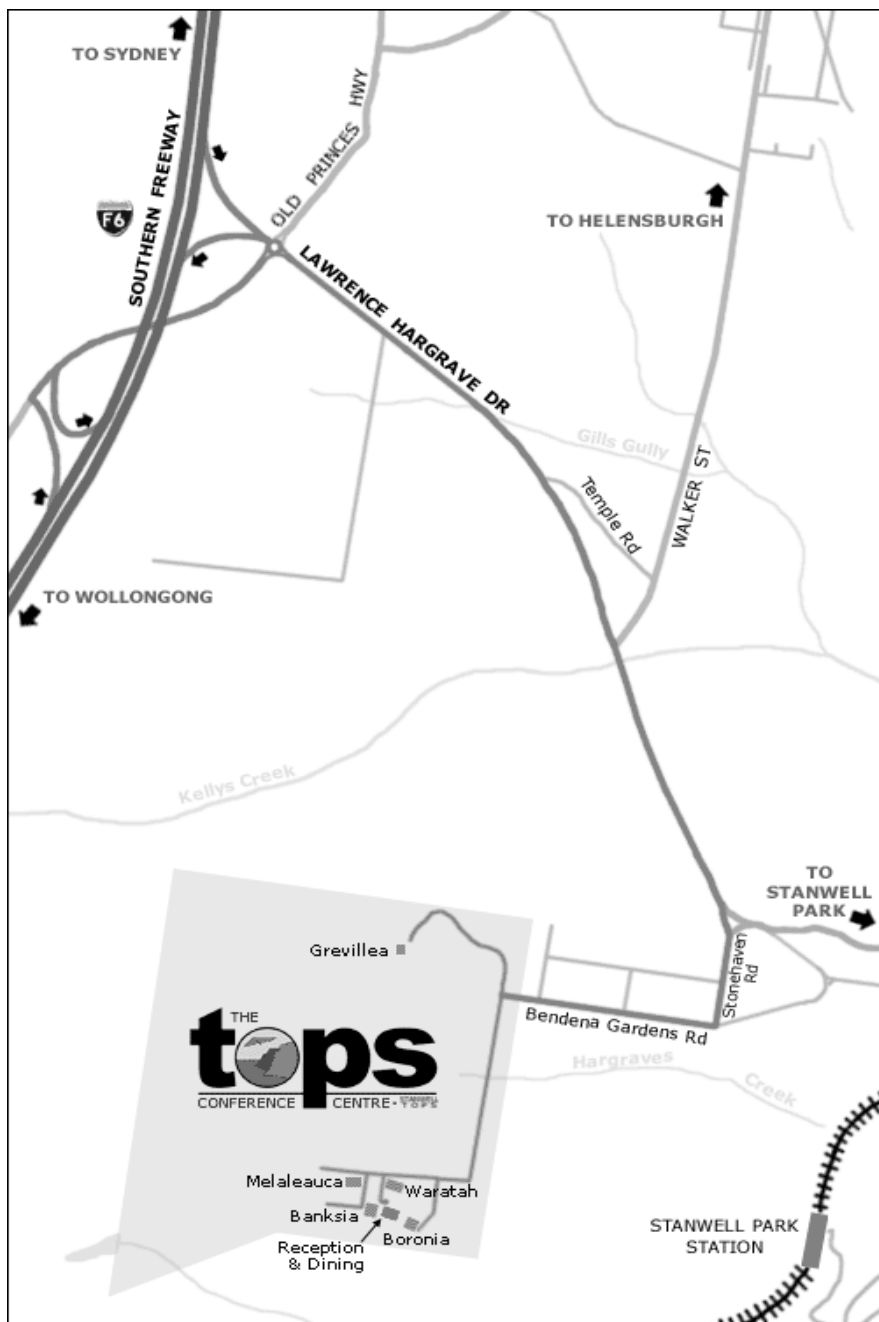
Sunday 19 September 2010

- 7.30am Breakfast
- 8.30pm Demonstration – Clinton and Ray Nesci
- 10.00am Workshop 5 - Derek Oakley
Workshop 6 - Clinton Nesci (if sufficient demand)
- 12.30pm Lunch
- 1.30pm Workshop 5 & 6 (continued)
- 3.00pm Raffles and Close

Accessing the Banksia Complex

Car access for unloading is from the side road running off the main road. Please unload your car as quickly as possible and return it to the carpark. Otherwise park your car and walk down the road to the reception area.





All forms should be sent to The Secretary, Illawarra Bonsai Society Inc, PO Box 294, Jannali 2226 and payment made by one of the following options:

- By cheque/money order made payable to Illawarra Bonsai Society Inc
Post to: PO Box 294, Jannali, 2226
- Direct deposit: Illawarra Bonsai Society
St George Bank, BSB 112-879, Acc No. 065568406
Please use your full name as a reference when direct depositing

The closing date for registrations is Friday 3 September 2010.

If you have any enquires regarding the weekend workshops please call Brenda on 9547.2157 or Jamie on 0415 440 807, or visit the website of Illawarra Bonsai Society Inc.

www.illawarrabonsaisociety.org

Name:		Contact Ph:		
Address:				
Email:				
Club Affiliation:				
Registration		No		Amount
Full registration (6pm Friday to 4pm Sunday) includes all meals (except Friday dinner) & accommodation \$140/person				
Day registration (per day) (includes morning & afternoon teas & lunch \$75/person		Sat	Sun	
Saturday night dinner (for single day registrants) \$15/person				
Sub-Total				
Special Dietary Requirements				
Workshops: Bonsai workshops cost \$20 per workshop. Strictly limited to 8 persons per workshop (please indicate a second choice). Workshops will be filled in the order in which the registration forms are received, depending on demand, additional workshops (W4 & W6) may be arranged with each tutor.		No		Amount
Sat am	W 1	Derek Oakley		
Sat am	W 2	Clinton Nesci		
Sat pm	W 3	Clinton Nesci		
Sat pm	W 4	Derek Oakley (if sufficient demand)		
Sun am	W 5	Derek Oakley		
Sun am	W 6	Clinton Nesci (if sufficient demand)		
Sub-Total				
Total				
Special Orders (please pay at the weekend)				
Table Kit			Linen	

Note to Workshop Participants: First of all a bonsai workshop is when you bring along a tree you want to work on to an experienced bonsai artist, and your tree is designed in a collaborative process. Your instructor might ask you if you have a particular style in mind for the tree, but generally the main decisions are left to the instructor who has experience in such matters. The main cutting out is generally undertaken by your instructor (who might also do a sketch of what the “finished” tree will look like). You will generally undertake the wiring and trimming, but the main bending and styling is normally completed by the instructor. You will, as a rule, carry out the root pruning, but the instructor will advise you on the placement of your tree in the correct position in its new pot.

In order to obtain value from your workshop experience please pay the tutors the courtesy of presenting them with material that is worthy of their artistic efforts. Please also ensure that you bring sufficient tools, wire, pots, soil and other materials in order to complete the workshop. A limited supply of wire and tools will be available for purchase at the workshop.

Work on appropriate material	Present your instructor with a tree that is worthy of his time and effort (and your money).
Prepare your material	Preparation is important. Clean the tree up as much as you can by removing weeds and expose the nebari.
Consider the experience of your instructor	If your instructor has a reputation for and experience in creating a pretty azalea bonsai, it's probably not appropriate to bring along a gigantic collected tree to be carved with a chain saw. However, it may not always be the case.
Come prepared	Bring all the tools and materials you need to carry out the work planned.
Cleaning up	Clean up the mess you have left. Cut-off branches, soil from repotting, old plastic pots, etc all go into a suitable bin. Please clean up your work area (and that includes the floor) to gain a reputation as a responsible bonsai workshop citizen.

Your instructor can't be with you all the time – there are other people in the workshop seeking his/her time. Be patient and try to avoid seeking “design decisions” from the audience – no matter how experienced or talented they may be. You are paying a (small) fee to share your instructor's experience, so don't introduce a third party into the collaboration. Try to avoid asking the instructor questions when he/she is attending to other workshop participants.

And observers: Please be mindful that it is the participant who has paid for the instructor's time. As an observer you should not interrupt communication between the instructor and the participant. Please remember that everyone is trying to learn, and keep the chatter with fellow observers to a minimum.

(An extract from “Bonsai Workshop Etiquette” by Illawarra Bonsai Society Inc.